

LED PIPE

C3S | 3C Integral Driver

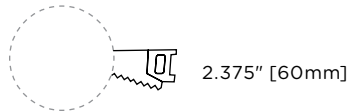
Cylinder Installation Instructions

WARNING

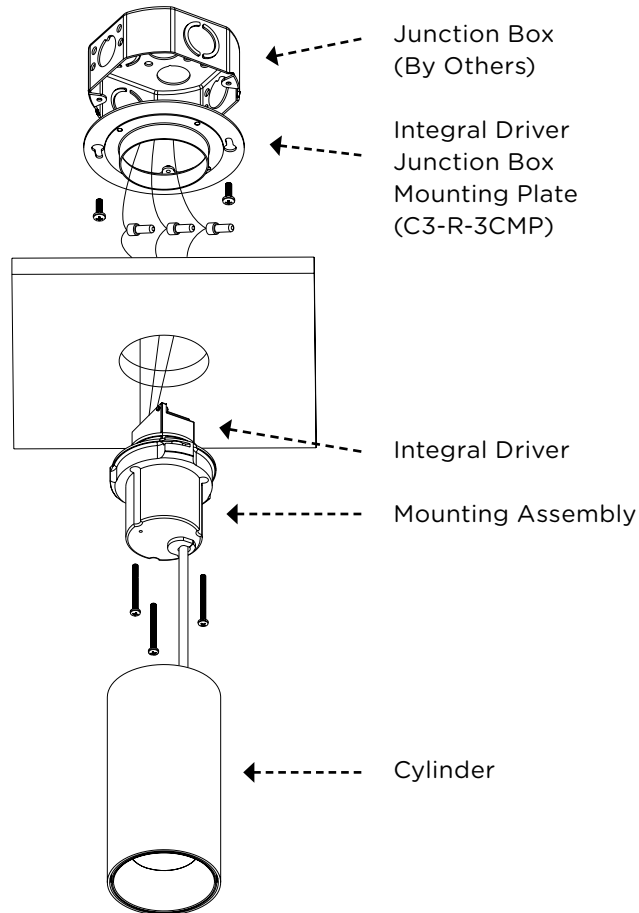
This product must be installed in accordance with the applicable code by a person familiar with the construction and operation of the product and the hazards involved.

Risk of Fire or Electric Shock. Serious injury or death may occur. **TURN OFF POWER** prior to servicing or installing this product.

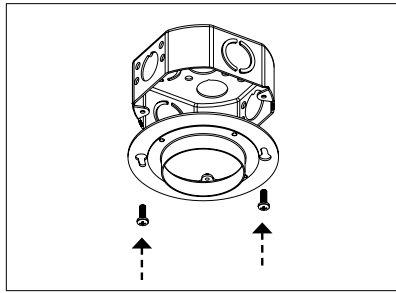
CEILING CUTOUT DIMENSIONS



CYLINDER ASSEMBLY

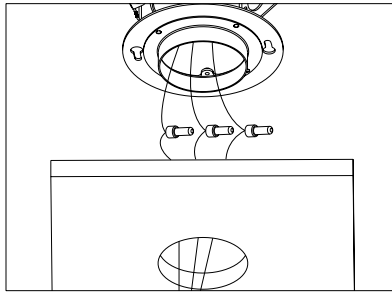


STEP 1



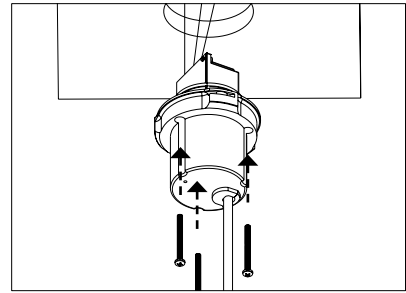
Fasten integral driver junction box mounting plate to junction box (by others). **Must be installed prior to ceiling installation.**

STEP 2



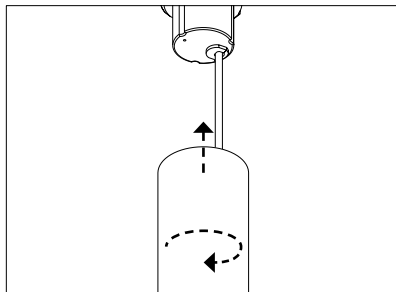
Connect driver leads to supply voltage. Ensure the correct voltage is selected. Refer to "Wiring Instructions" document.

STEP 3



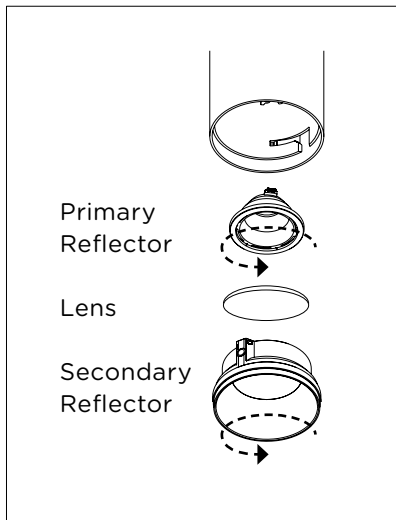
Fasten mounting assembly to the integral driver junction box mounting plate with supplied fasteners.

STEP 4



Ensure secondary leads are connected (+)(-) with lever locks. Twist cylinder clockwise to lock to the mounting assembly.

REFLECTOR + LENS SERVICE



To service or change the reflector and lens, rotate the secondary reflector 45° counter clockwise to release. Then rotate the primary reflector 45° counter clockwise to release.

LED PIPE

C3S | 3C Remodel Driver

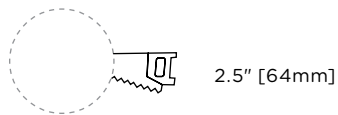
Cylinder Installation Instructions

WARNING

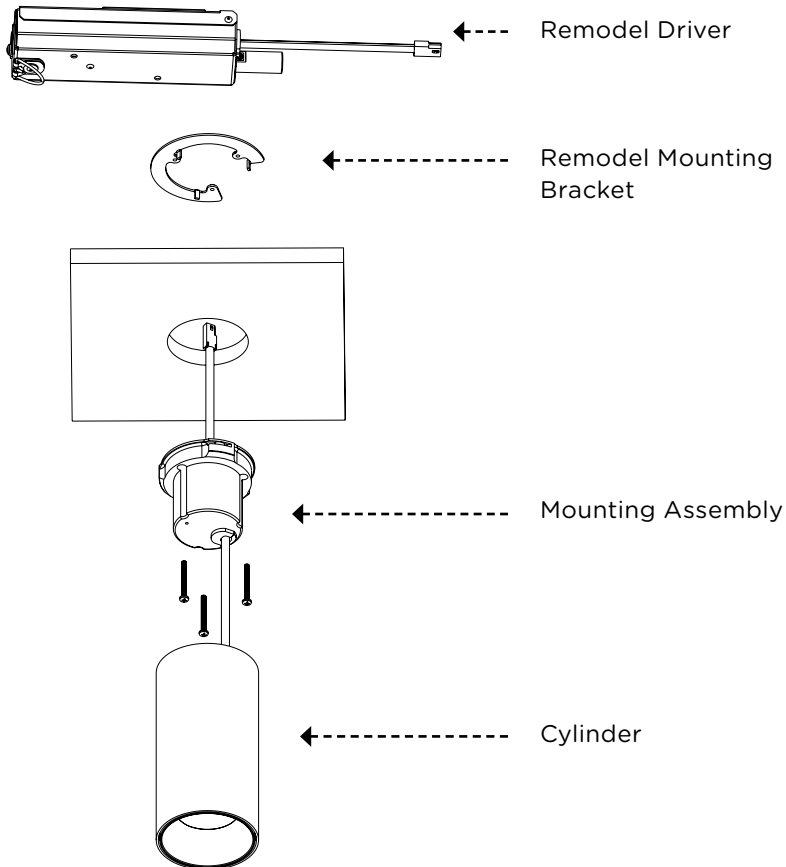
This product must be installed in accordance with the applicable code by a person familiar with the construction and operation of the product and the hazards involved.

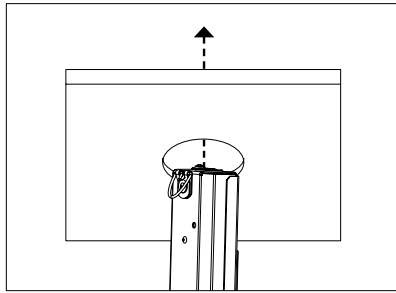
Risk of Fire or Electric Shock. Serious injury or death may occur. **TURN OFF POWER** prior to servicing or installing this product.

CEILING CUTOUT DIMENSIONS

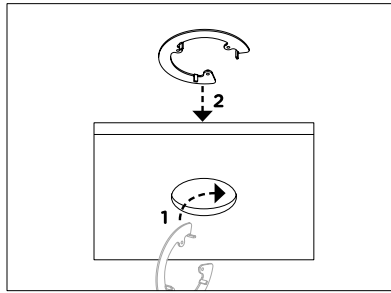


CYLINDER ASSEMBLY

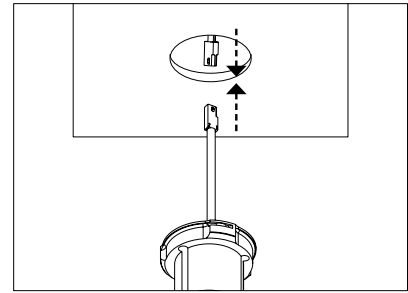


STEP 1

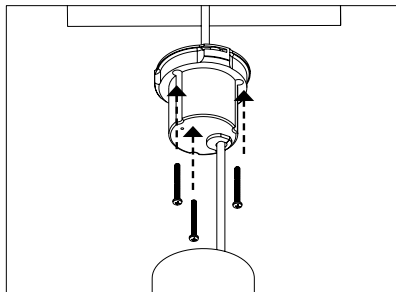
Connect driver leads to correct supply voltage. Push driver through ceiling opening and secure in place. Refer to wiring and driver installation instructions document.

STEP 2

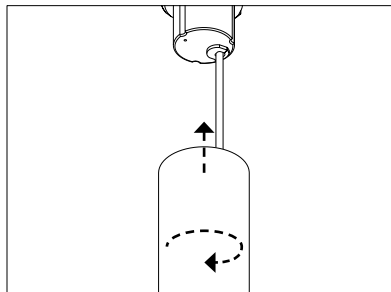
Twist remodel mounting bracket through ceiling opening. Drop in place with tabs facing down.

STEP 3

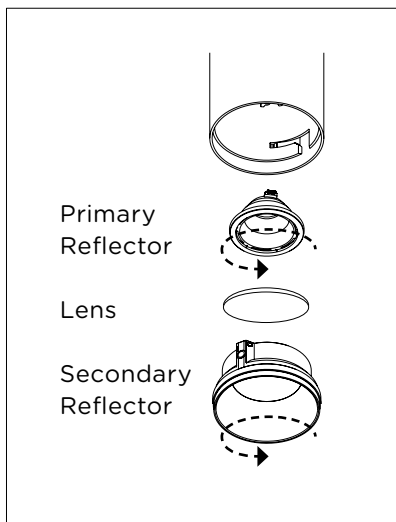
Connect remodel driver to mounting assembly with the quick connect plugs.

STEP 4

Fasten mounting assembly to the remodel mounting bracket with supplied fasteners.

STEP 5

Ensure secondary leads are connected (+)(-) with lever locks. Twist cylinder clockwise to lock to the mounting assembly.

REFLECTOR + LENS SERVICE

To service or change the reflector and lens, rotate the secondary reflector 45° counter clockwise to release. Then rotate the primary reflector 45° counter clockwise to release.

LED PIPE

C3S | 5C Integral Driver (LE, LH, P1 Dimming)

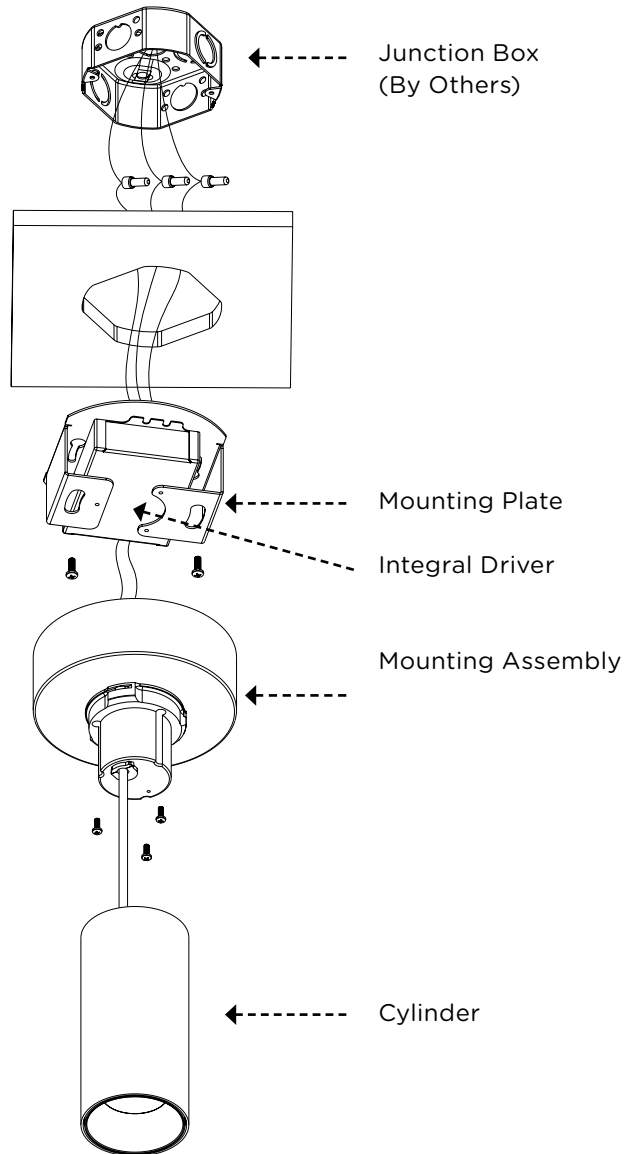
Cylinder Installation Instructions

WARNING

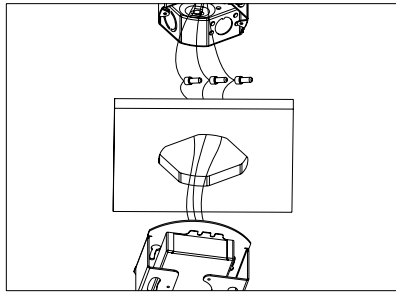
This product must be installed in accordance with the applicable code by a person familiar with the construction and operation of the product and the hazards involved.

Risk of Fire or Electric Shock. Serious injury or death may occur. **TURN OFF POWER** prior to servicing or installing this product.

CYLINDER ASSEMBLY

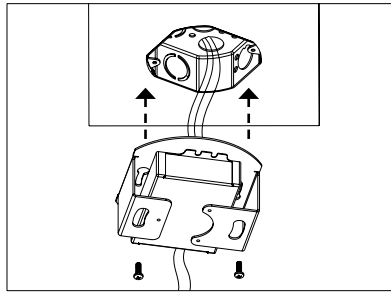


STEP 1



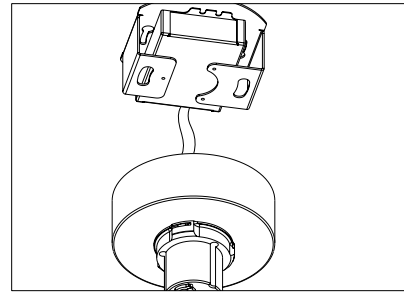
Connect driver leads to supply voltage. Ensure the correct voltage is selected. Refer to "Wiring Instructions" document.

STEP 2



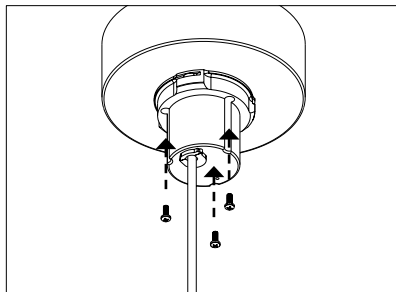
Fasten mounting plate to junction box (by others),

STEP 3



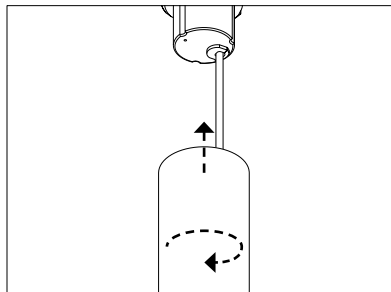
Ensure secondary leads are connected (+)(-).

STEP 4



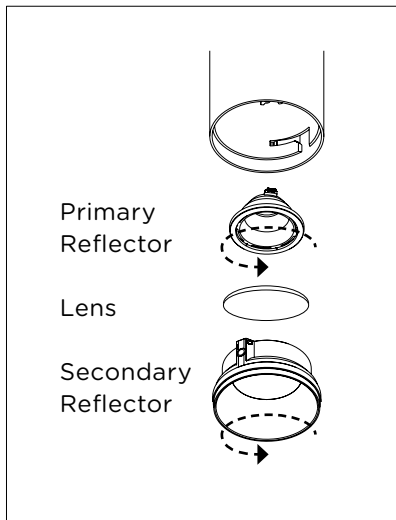
Fasten mounting assembly to mounting plate with supplied fasteners.

STEP 5



Ensure secondary leads are connected (+)(-) with lever locks. Twist cylinder clockwise to lock to the mounting assembly.

REFLECTOR + LENS SERVICE



To service or change the reflector and lens, rotate the secondary reflector 45° counter clockwise to release. Then rotate the primary reflector 45° counter clockwise to release.

LED PIPE

C3S | 5C Integral Driver (S, P Dimming)

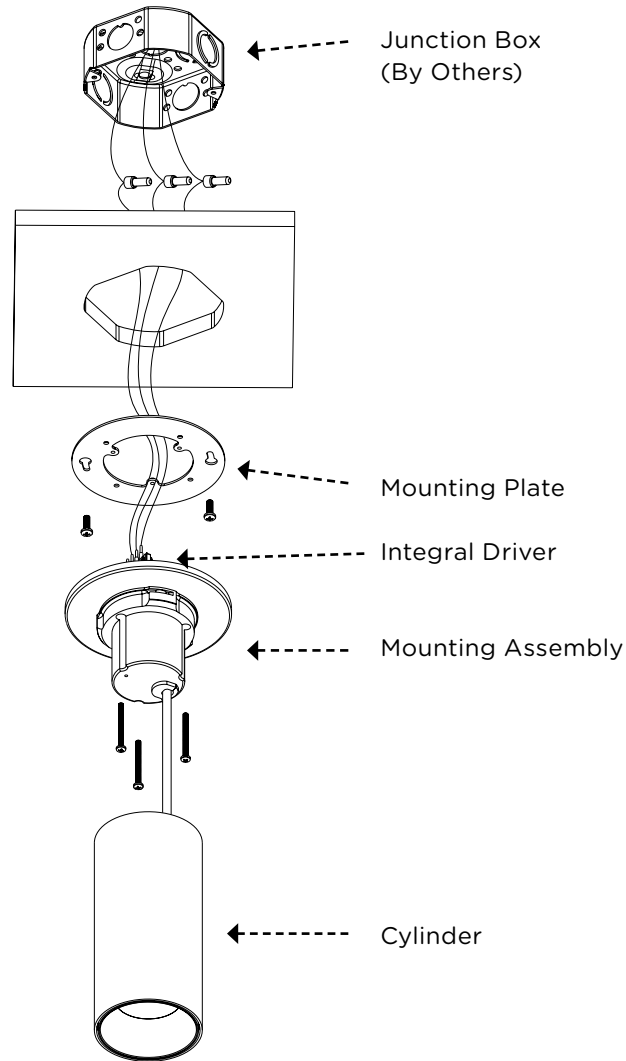
Cylinder Installation Instructions

CYLINDER ASSEMBLY

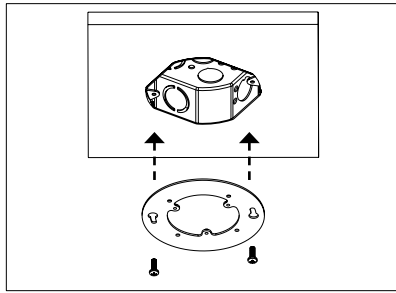
WARNING

This product must be installed in accordance with the applicable code by a person familiar with the construction and operation of the product and the hazards involved.

Risk of Fire or Electric Shock. Serious injury or death may occur. **TURN OFF POWER** prior to servicing or installing this product.

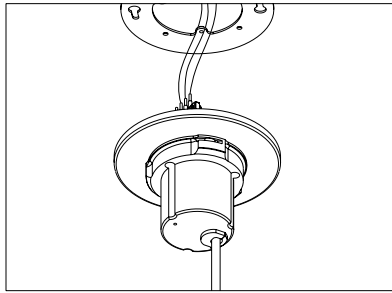


STEP 1



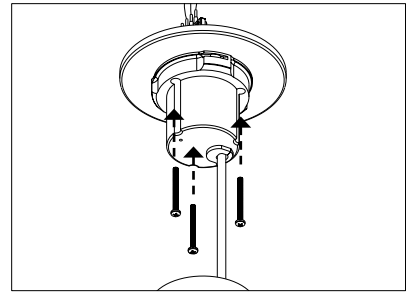
Fasten mounting plate to junction box (by others),

STEP 2



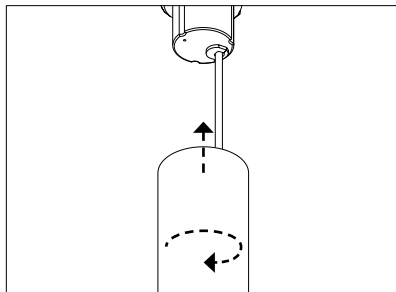
Connect driver leads to supply voltage. Ensure the correct voltage is selected. Refer to "Wiring Instructions" document.

STEP 3



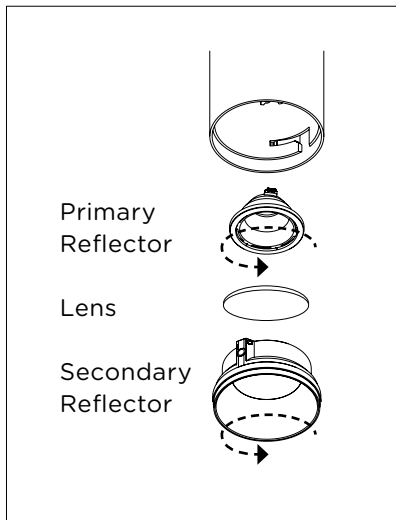
Fasten mounting assembly to the mounting plate with supplied fasteners.

STEP 4



Ensure secondary leads are connected (+)(-) with lever locks. Twist cylinder clockwise to lock to the mounting assembly.

REFLECTOR + LENS SERVICE



To service or change the reflector and lens, rotate the secondary reflector 45° counter clockwise to release. Then rotate the primary reflector 45° counter clockwise to release.

LED PIPE

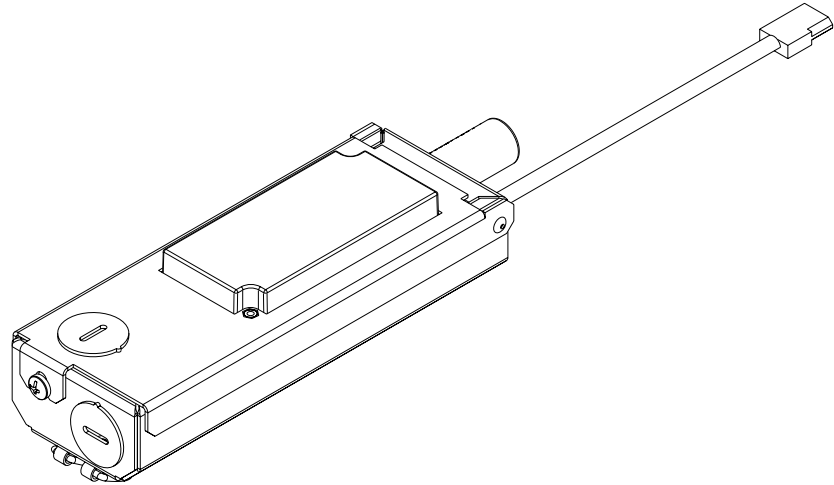
DRB-C3 | DRX-C3 | Remodel Driver

Driver Installation Instructions

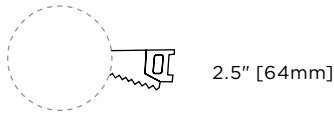
WARNING

This product must be installed in accordance with the applicable code by a person familiar with the construction and operation of the product and the hazards involved.

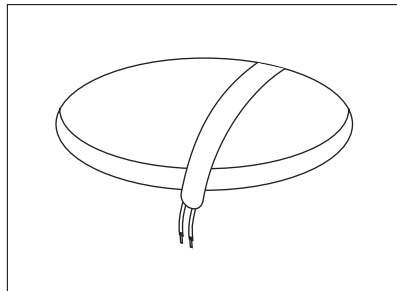
Risk of Fire or Electric Shock. Serious injury or death may occur. **TURN OFF POWER** prior to servicing or installing this product.



CEILING CUTOUT DIMENSIONS

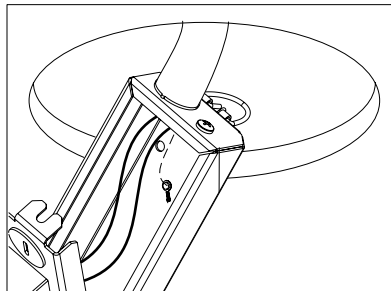


STEP 1



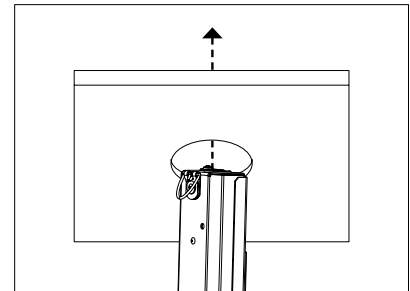
Pull electrical wire through the ceiling cutout.

STEP 2



Connect driver leads to supply voltage. Ensure the correct voltage is selected. Refer to "Wiring Instructions" document.

STEP 1



Push driver through ceiling opening and secure in place and install cylinder. Refer to cylinder installation instructions document.

DRB-C3-DRX-C3-Install • Subject to change without notice • REV 2019.03.27 • 1/2

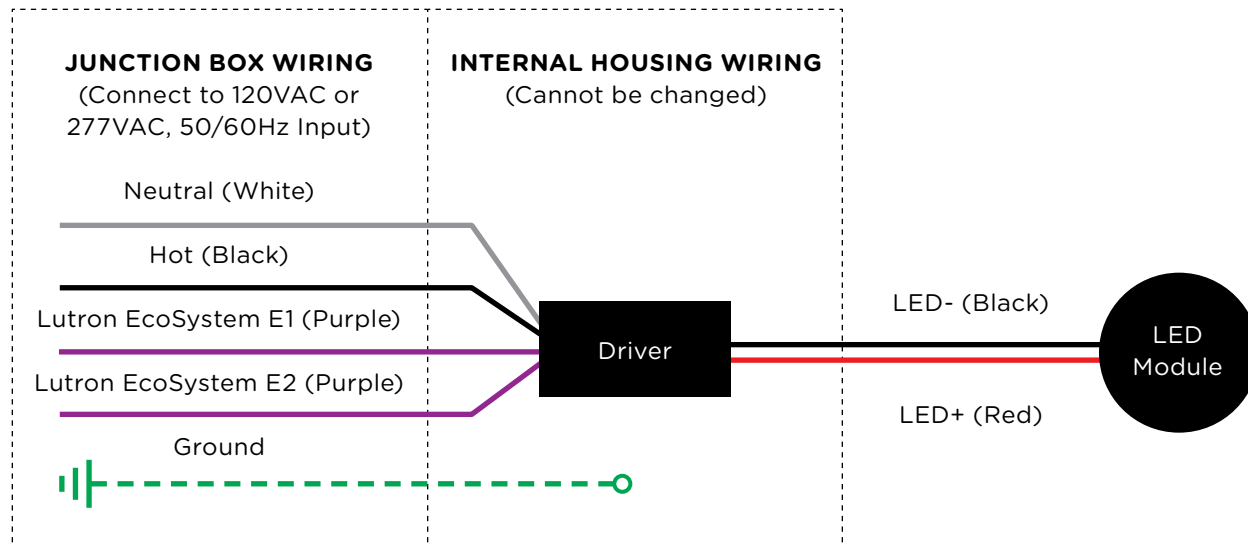
Wiring Instructions

WARNING

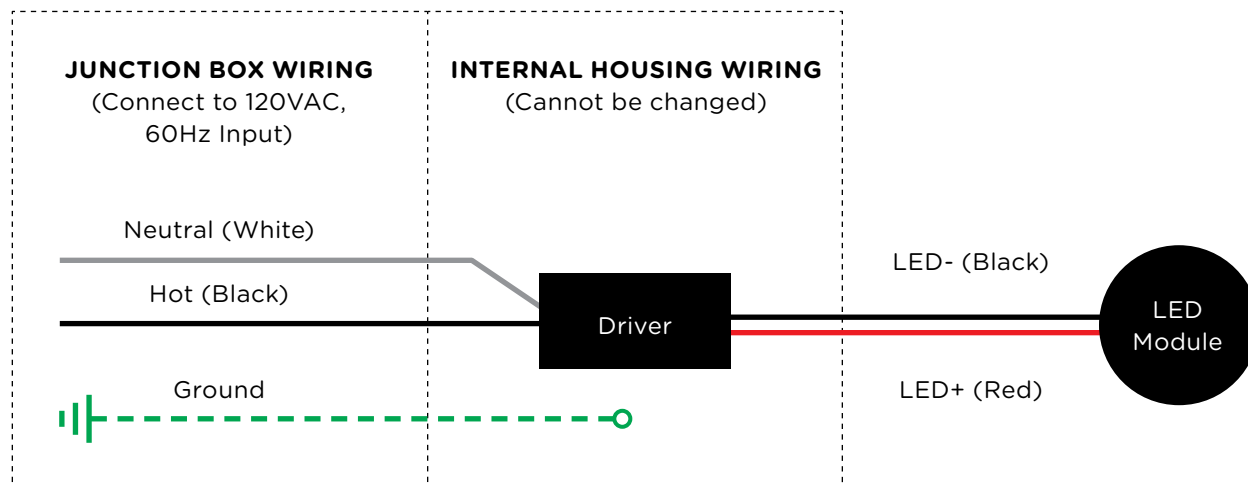
TURN OFF POWER before connecting LED product. Failure to do so will cause **IMMEDIATE LED FAILURE**.

This product must be installed in accordance with the applicable code by a person familiar with the construction and operation of the product and the hazards involved.

LUTRON ECOSYSTEM (LH) DIMMING



LUTRON PHASE (LE) DIMMING



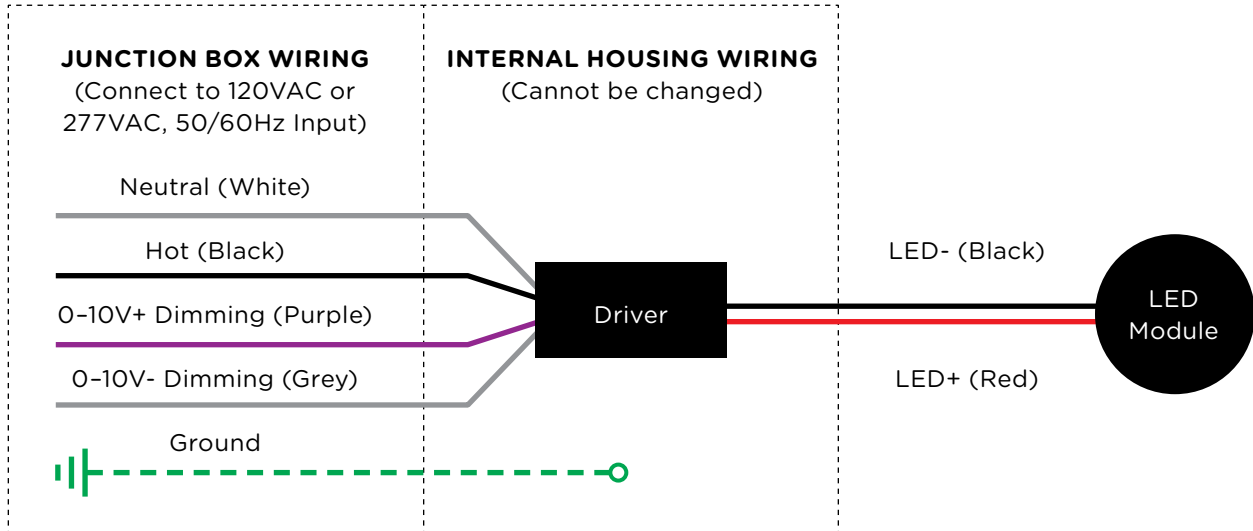
Wiring Instructions

WARNING

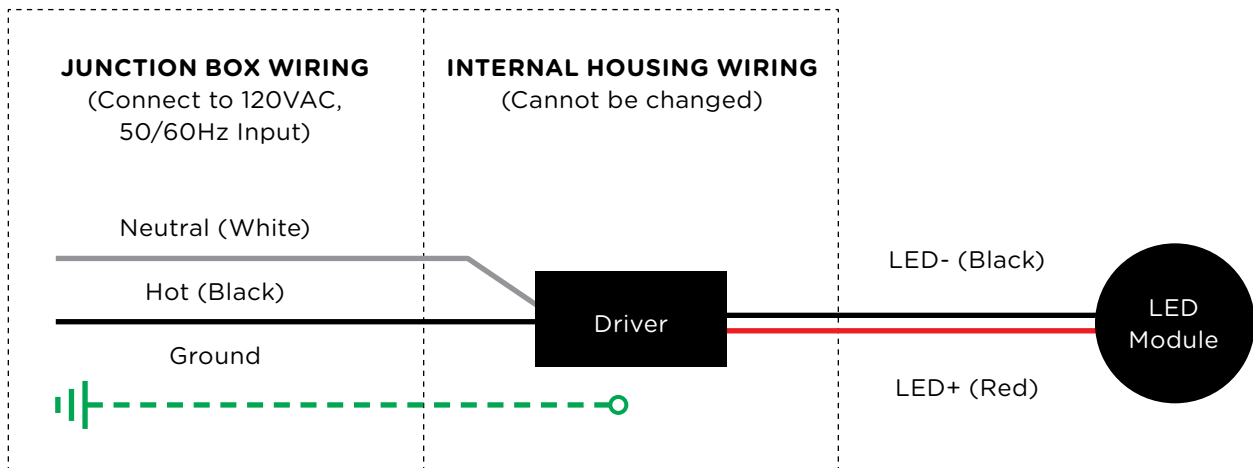
TURN OFF POWER before connecting LED product. Failure to do so will cause **IMMEDIATE LED FAILURE**.

This product must be installed in accordance with the applicable code by a person familiar with the construction and operation of the product and the hazards involved.

0-10V (P) & 0-10V (P1) DIMMING



PHASE (S) DIMMING



Wiring Instructions

WARNING

TURN OFF POWER before connecting LED product. Failure to do so will cause **IMMEDIATE LED FAILURE**.

This product must be installed in accordance with the applicable code by a person familiar with the construction and operation of the product and the hazards involved.

DALI (D) DIMMING

