

# Legacy Housings

R4P-F-R | Halogen & LED


## Round New Construction Plate

When construction is a step ahead of design the remodel pan fulfills the need for interim spacial planning while trim selection is being finalized. The plate fits easily into non-insulated ceiling spaces, saving time to choose from the same wide array of trims as standard non-insulated housings.


### FEATURES

- Sheet metal pan
- 16" hanger bars standard
- Compatible with DRX and DRB remodel drivers and corresponding luminaires

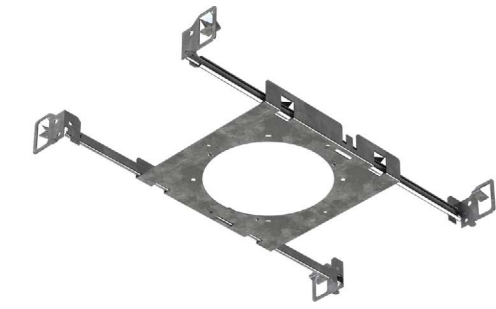
### CEILING CUTOUT—TRIMMED & TRIMLESS

 Ø 4.5" [115mm]

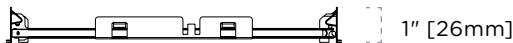
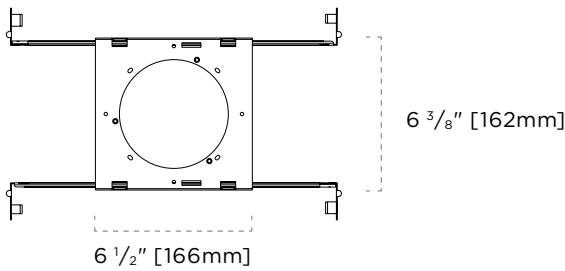
### CEILING CUTOUT—WOOD TRIMLESS

 Ø 3 9/16" [100mm]

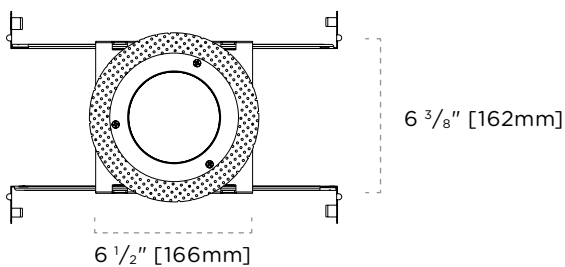
### CERTIFICATIONS



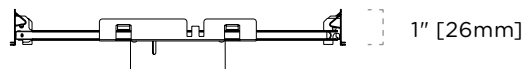
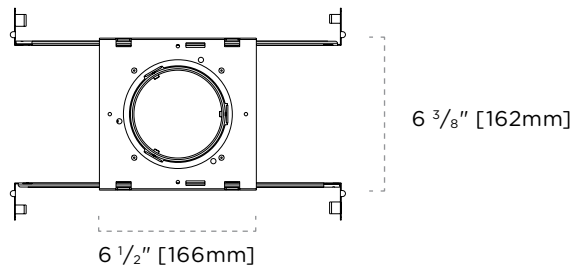
### DIMENSIONS—TRIMMED



### DIMENSIONS—TRIMLESS



### DIMENSIONS—WOOD TRIMLESS



# Legacy Housings

R4P-F-R | Halogen & LED



## Round New Construction Plate

### TAG TYPE



### ORDER FORM

1	2	3

#### 1. HOUSING

##### R4P-F-R

4" Round New Construction Plate

#### 2. FLANGE TYPE

**T** Trimmed

**TL** Trimless

**TLW-XX** Trimless Wood Ceiling<sup>12</sup>

#### 3. OPTIONS

**RCF** Round Aperture Collar<sup>3</sup>

#### NOTES

**1** TLW-XX wood trimless flange type is matched to trim finish. XX refers to trim finish code and must be specified at time of order. See trim spec sheet for color availability.

**2** TLW-XX wood trimless ceiling thickness to be specified at time of order. Requires consultation with lightheaded sales personnel.

**3** RCF option is not available in TLW Flange Type.