



Wall Lights

2-071 | Standard LED

1W Wall Light Enclosure

FEATURES

- Designed for compatibility with a 350mA driver, optional remote driver sold separately.
- Concrete wall installation option available

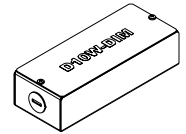
COMPATIBLE DRIVERS

ELECTRONIC LOW VOLTAGE (ELV)

Smooth, flicker-free dimming from 100% to 20%.

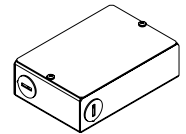
D10W-DIM

Channels: 1
 Min. Load Units: 2
 Max. Load Units: 9
 Voltage: 120



D15W-DIM

Channels: 1
 Min. Load Units: 9
 Max. Load Units: 13
 Voltage: 120

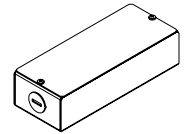


0-10V DIMMING

Smooth, flicker-free dimming from 100% to 10%.

D1CH-DIM

Channels: 1
 Min. Load Units: 1
 Max. Load Units: 11
 Voltage: 120/277

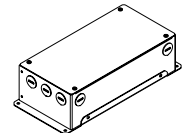


0-10V DIMMING

SMOOTH, FLICKER-FREE DIMMING FROM 100% TO 1%.

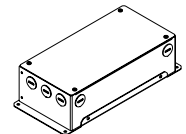
D4CH-DIM

Channels: 2
 Min. Load Units: 2
 Max. Load Units: 16/CH
 Voltage: 120/277



D2CH-DIM

Channels: 2
 Min. Load Units: 1
 Max. Load Units: 16/CH
 Voltage: 120/277

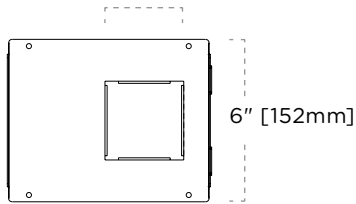


CERTIFICATIONS



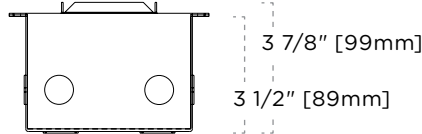
NON-INSULATED & INSULATED

SQ. 2 3/4" [70mm]



6" [152mm]

7 1/2" [191mm]



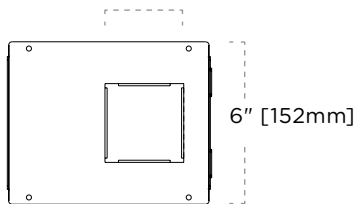
3 7/8" [99mm]

3 1/2" [89mm]

5" [127mm]

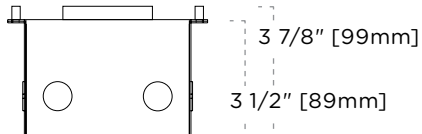
CONCRETE POUR

SQ. 2 3/4" [70mm]



6" [152mm]

7 1/2" [191mm]



3 7/8" [99mm]

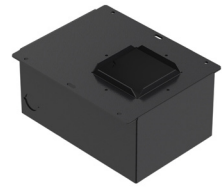
3 1/2" [89mm]

5" [127mm]

Wall Lights

2-071 | Standard LED

1W Wall Light Enclosure



TAG TYPE

--

ORDER FORM

1	2	3

1. HOUSINGS

2-071 Wall Light Enclosure

2. HOUSING TYPE

WL Non-Insulated & Insulated

WL-CH Concrete Housing

3. VOLTAGE

120¹

RT Remote Driver²

NOTES

1 120 Voltage is supplied with an integral non-dimming driver.

1 RT is required for a Remote Driver. Driver ordered separately.