



Wall Lights

2-070 | Incandescent

Wall Light Enclosure

This enclosure is designed to provide a subtle pathway for lighting. With numerous options for remote or integral drivers, it can be mounted in insulated or non-insulated walls and concrete pour wall installations.

FEATURES

- 20 Ga. cold rolled steel baseplate
- Integrated electronic transformer
- Concrete pour installation option available

PERFORMANCE SUMMARY

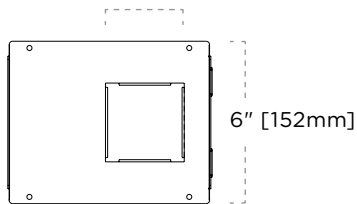
Housing Type	Housing Box	Halogen	Xenon
Non-Insulated	—	10W	10W
	✓	20W	20W
Insulated	✓	10W	20W
	✓	20W	20W

CERTIFICATIONS

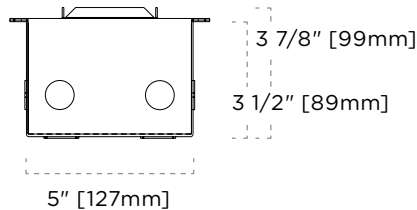


NON-INSULATED & INSULATED

SQ. 2 3/4" [70mm]



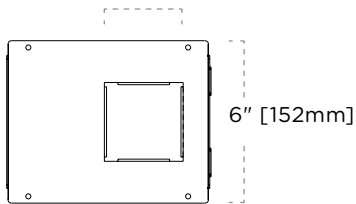
7 1/2" [191mm]



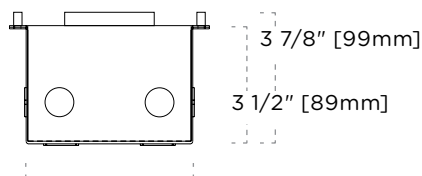
5" [127mm]

CONCRETE POUR

SQ. 2 3/4" [70mm]



7 1/2" [191mm]

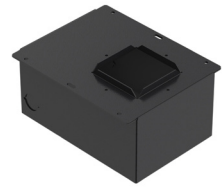


5" [127mm]

Wall Lights

2-070 | Incandescent

Wall Light Enclosure



TAG TYPE

--

ORDER FORM

1	2	3

1. HOUSING

2-070 Wall Light Enclosure

2. HOUSING TYPE

WL Insulated & Non-Insulated

WL-CH Concrete Pour

3. VOLTAGE

120

277