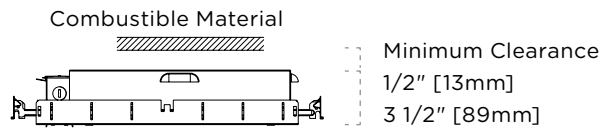
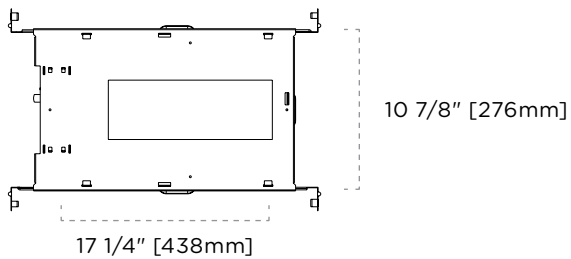


DIMENSIONS—TRIMMED



Legacy Housings

2-065 | Incandescent

Quadra 3 Non-Insulated

FEATURES

- Rated for non-insulated ceilings
- 14"–25" adjustable hanger bars
- 20 Ga. cold rolled steel baseplate
- 18 Ga. galvanized steel junction box
- 5 junction box knock outs
- MR16 porcelain Bi Pin socket type GX5.3
- MR16 low voltage (12V) lamp sold separately
- GU10 line voltage (120V) lamp sold separately
- Over lamping protection
- Transformer accessible through the ceiling
- Approved for branch circuit wiring

CEILING CUTOUT

3 7/8" [99mm] x 10 3/4" [188mm]

PERFORMANCE SUMMARY

Lamp	Series	Input Voltage	
		120V	277V
		Maximum Wattage	
MR16	Electronic Transformer	37W (x3)	37W (x3)
MR16	E15 Electronic Transformer	15W (x3)	15W (x3)
GU10	GU10 Halogen Lamp	50W (x3)	—
GU10	GU10 LED Lamp	15W (x3)	—

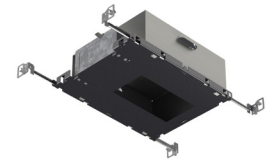
CERTIFICATIONS



Legacy Housings

2-065 | Incandescent

Quadra 3 Non-Insulated



TAG TYPE

--

ORDER FORM

1	2	3	4	5

1. HOUSING

2-065 Quadra 3

2. HOUSING TYPE

F-Q3 Non-Insulated

3. TRANSFORMER

E MR16 Electronic Transformer
(Halogen Lamp)

E15 MR16 Electronic Transformer
(Halogen Replacement Lamp)¹

GU10-HAL GU10 Halogen Lamp

GU10-LED GU10 LED²

4. VOLTAGE

120

277

5. OPTIONS

BP Black Painted Interior

WP White Painted Interior

NOTES

1 E15 transformer is rated for a maximum 15W, lamp sold separately. Ensure lamp and dimmer compatibility with lamp manufacturer.

2 GU10-LED is rated for a maximum 15W, lamp sold separately.