

# Legacy Housings

2-060 | Incandescent

## Round High Watt Non-Insulated

### FEATURES

- Rated for non-insulated ceilings
- 14"-25" adjustable hanger bars
- 20 Ga. cold rolled steel baseplate
- 18 Ga. galvanized steel junction box
- 5 junction box knock outs
- MR16 porcelain Bi Pin socket type GX5.3
- MR16 low voltage (12V) lamp sold separately
- Over lamping protection
- Transformer accessible through the ceiling
- Approved for branch circuit wiring

### CEILING CUTOUT

Ø 4 1/2" [115mm]

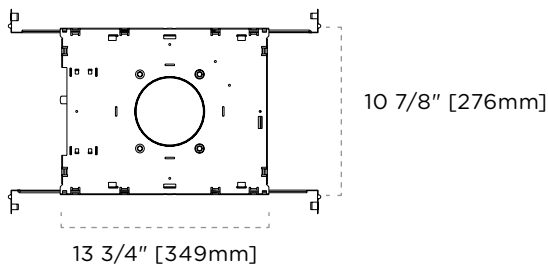
### PERFORMANCE SUMMARY

Lamp	Series	Input Voltage		
		120V	277V	347V
		Maximum Wattage		
MR16	Magnetic Transformer	75W	75W	75W
MR16	Electronic Transformer	75W	75W	—

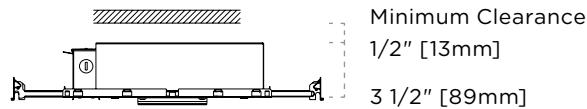
### CERTIFICATIONS



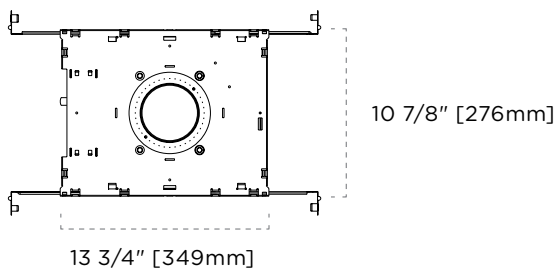
### DIMENSIONS—TRIMMED



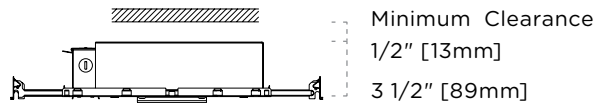
Combustible Material



### DIMENSIONS—TRIMLESS



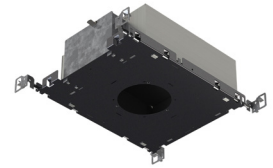
Combustible Material



# Legacy Housings

2-060 | Incandescent

## Round High Watt Non-Insulated



### TAG TYPE

--

### ORDER FORM

1	2	3	4	5

#### 1. HOUSING

**2-060** Round High Watt

#### 2. HOUSING TYPE

**F** Non-Insulated

**F-TL** Trimless Non-Insulated

#### 3. TRANSFORMER

**E** MR16 Electronic Transformer  
(Halogen Lamp)

**M** MR16 Magnetic Transformer

#### 4. VOLTAGE

**120**

**277**

**347<sup>1</sup>**

#### 5. OPTIONS

**BP** Black Painted Interior

**WP** White Painted Interior

#### NOTES

**1** 347 voltage is only available with M magnetic transformer.