

Legacy Housings

2-060 | Incandescent

Round Deep High Watt Non-Insulated

FEATURES

- Rated for non-insulated ceilings
- 14"-25" adjustable hanger bars
- 20 Ga. cold rolled steel baseplate
- 18 Ga. galvanized steel junction box
- 5 junction box knock outs
- MR16 porcelain Bi Pin socket type GX5.3
- MR16 low voltage (12V) lamp sold separately
- Over lamping protection
- Transformer accessible through the ceiling
- Approved for branch circuit wiring

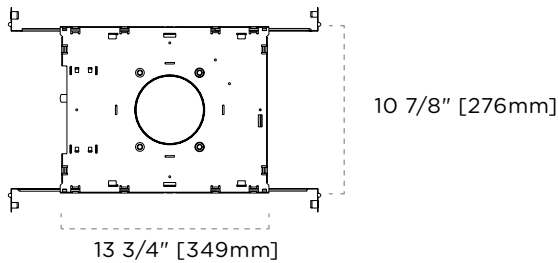
CEILING CUTOUT

Ø 4 1/2" [115mm]

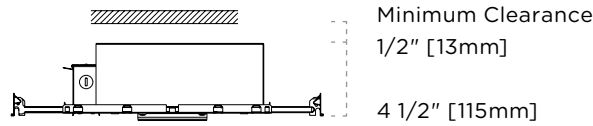
PERFORMANCE SUMMARY

Lamp	Series	Input Voltage		
		120V	277V	347V
		Maximum Wattage		
MR16	Magnetic Transformer	75W	75W	75W
MR16	Electronic Transformer	75W	75W	—
MR16	Q-Tran Silent Magnetic Transformer	75W	75W	—
MR16	Magnetic Potted, Epoxy Encapsulated Transformer	75W	—	—

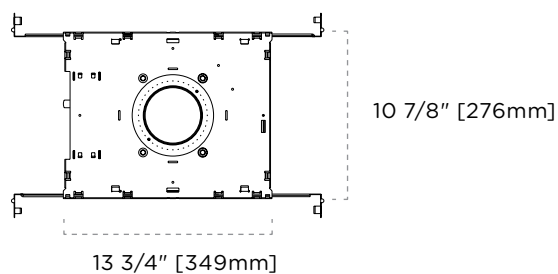
DIMENSIONS—TRIMMED



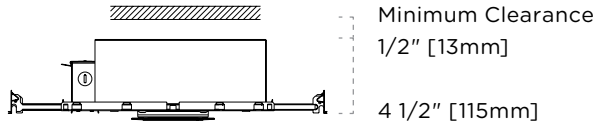
Combustible Material



DIMENSIONS—TRIMLESS



Combustible Material



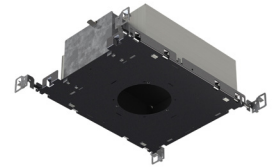
CERTIFICATIONS



Legacy Housings

2-060 | Incandescent

Round Deep High Watt Non-Insulated



TAG TYPE

--

ORDER FORM

1	2	3	4	5

1. HOUSING

2-060 Round High Watt

2. HOUSING TYPE

F-DA Deep Non-Insulated

F-TL-DA Trimless Deep Non-Insulated

3. TRANSFORMER

E MR16 Electronic Transformer
(Halogen Lamp)

M MR16 Magnetic Transformer

MPT MR16 Magnetic Potted
Transformer¹

TOR MR16 Q-Tran Toroidal Magnetic
Transformer

4. VOLTAGE

120

277

347²

5. OPTIONS

BP Black Painted Interior

WP White Painted Interior

NOTES

1 MPT transformer option is only
available in 120 voltage.

2 347 voltage is only available with M
magnetic transformer.