

Legacy Housings

2-060 | Incandescent

Round Chicago Plenum

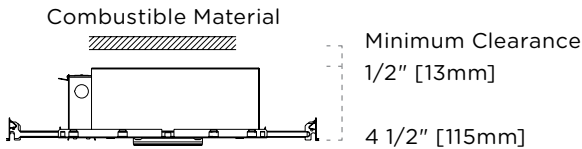
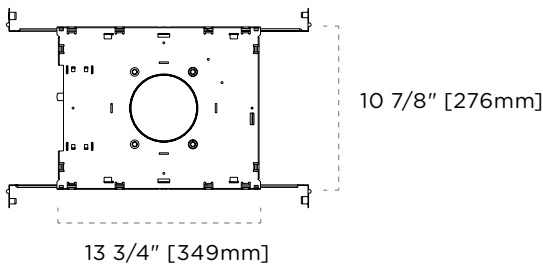
FEATURES

- Rated for insulation contact
- In accordance with CCEA (City of Chicago Environmental Air), Chicago electrical code section 18-27-300.22©
- 14"-25" adjustable hanger bars
- 20 Ga. cold rolled steel baseplate
- 18 Ga. galvanized steel junction box
- 5 junction box knock outs
- MR16 porcelain Bi Pin socket type GX5.3
- MR16 low voltage (12V) lamp sold separately
- GU10 line voltage (120V) lamp sold separately
- Over lamping protection
- Transformer accessible through the ceiling
- Approved for branch circuit wiring

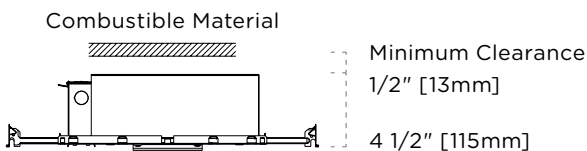
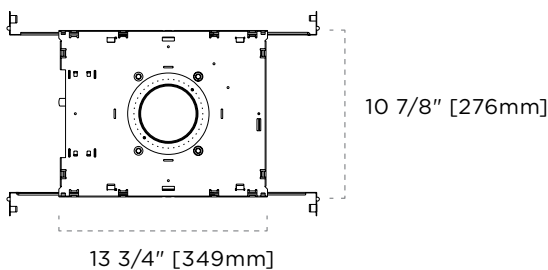
LISTINGS



DIMENSIONS—TRIMMED



DIMENSIONS—TRIMLESS



CEILING CUTOUT

Ø 4 1/2" [115mm]

PERFORMANCE SUMMARY

Lamp	Series	Input Voltage	
		120V	277V
		Maximum Wattage	
MR16	Magnetic Transformer	75W	75W
MR16	Electronic Transformer	75W	75W
MR16	E15 Electronic Transformer	15W	15W
GU10	GU10 Halogen Lamp	50W	—
GU10	GU10 LED Lamp	15W	—

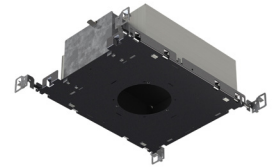
CERTIFICATIONS



Legacy Housings

2-060 | Incandescent

Round Chicago Plenum



TAG TYPE

--

ORDER FORM

1	2	3	4	5

1. HOUSING

2-060 Round

2. HOUSING TYPE

F-CP Chicago Plenum

F-TL-CP Trimless Chicago Plenum

3. SERIES

E MR16 Electronic Transformer
(Halogen Lamp)

E15 MR16 Electronic Transformer
(Halogen Replacement Lamp)¹

M MR16 Magnetic Transformer

GU10-HAL GU10 Halogen Lamp

GU10-LED GU10 LED²

4. VOLTAGE

120

277

5. OPTIONS

BP Black Painted Interior

WP White Painted Interior

NOTES

1 E15 transformer is rated for a maximum 15W, lamp sold separately. Ensure lamp and dimmer compatibility with lamp manufacturer.

2 GU10-LED is rated for a maximum 15W, lamp sold separately.