

Legacy Housings

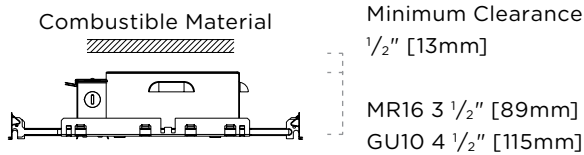
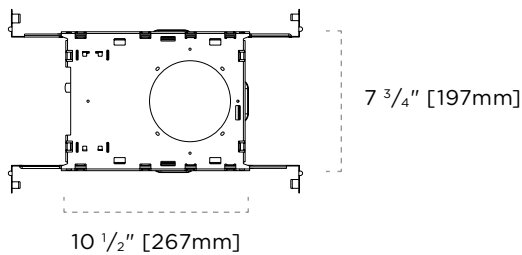
2-020 | Incandescent

Round Non-Insulated

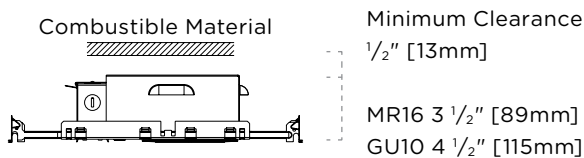
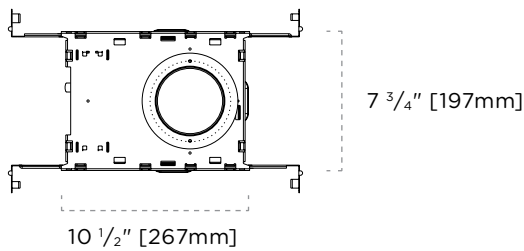
FEATURES

- Rated for non-insulated ceilings
- 14"–25" adjustable hanger bars
- 20 Ga. cold rolled steel baseplate
- 18 Ga. galvanized steel junction box
- 5 junction box knock outs
- MR16 porcelain Bi Pin socket type GX5.3
- MR16 low voltage (12V) lamp sold separately
- GU10 line voltage (120V) lamp sold separately
- Over lamping protection
- Transformer accessible through the ceiling
- Approved for branch circuit wiring

DIMENSIONS—TRIMMED



DIMENSIONS—TRIMLESS



CEILING CUTOUT

Ø 4 1/2" [115mm]

PERFORMANCE SUMMARY

Lamp	Series	Input Voltage		
		120V	277V	347V
		Maximum Wattage		
MR16	Magnetic Transformer	50W	50W	50W
MR16	Electronic Transformer	37W	37W	—
MR16	E15 Electronic Transformer	15W	15W	—
GU10	GU10 Halogen Lamp	50W	—	—
GU10	GU10 LED Lamp	15W	—	—

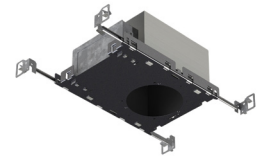
CERTIFICATIONS



Legacy Housings

2-020 | Incandescent

Round Non-Insulated



TAG TYPE

--

ORDER FORM

1	2	3	4	5

1. HOUSING

2-020 Round

2. HOUSING TYPE

F Non-Insulated

F-TL Trimless Non-Insulated

3. SERIES

E MR16 Electronic Transformer
(Halogen Lamp)

E15 MR16 Electronic Transformer
(Halogen Replacement Lamp)¹

M MR16 Magnetic Transformer

GU10-HAL GU10 Halogen Lamp

GU10-LED GU10 LED²

4. VOLTAGE

120

277

347³

5. OPTIONS

BP Black Painted Interior

WP White Painted Interior

NOTES

1 E15 transformer is rated for a maximum 15W, lamp sold separately. Ensure lamp and dimmer compatibility with lamp manufacturer.

2 GU10-LED is rated for a maximum 15W, lamp sold separately.

3 347 voltage is only available with M magnetic transformer.