

Legacy Housings

2-017 | Incandescent

Square Shallow Insulated

FEATURES

- Rated for insulation contact
- Airtight in accordance with ASTM E283
- 14"-25" adjustable hanger bars
- 20 Ga. cold rolled steel baseplate
- 18 Ga. galvanized steel junction box
- 5 junction box knock outs
- MR16 porcelain Bi Pin socket type GX5.3
- MR16 low voltage (12V) lamp sold separately
- GU10 line voltage (120V) lamp sold separately
- Over lamping protection
- Transformer accessible through the ceiling
- Approved for branch circuit wiring

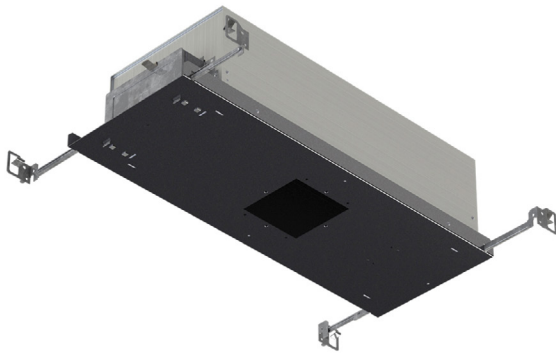
CEILING CUTOUT

3 7/8" [99mm] X 3 7/8" [99mm]

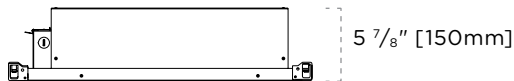
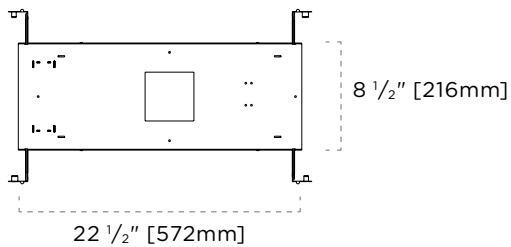
PERFORMANCE SUMMARY

Lamp	Series	Input Voltage		
		120V	277V	347V
		Maximum Wattage		
MR16	E15 Electronic Transformer	15W	15W	—
MR16	Q-Tran Silent Magnetic Transformer	50W	50W	—
GU10	GU10 Halogen Lamp	50W	—	—
GU10	GU10 LED Lamp	15W	—	—

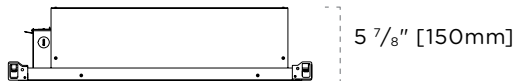
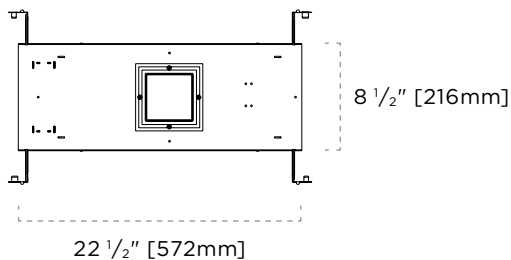
CERTIFICATIONS



DIMENSIONS—TRIMMED



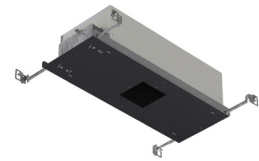
DIMENSIONS—TRIMLESS



Legacy Housings

2-017 | Incandescent

Square Shallow Insulated



TAG TYPE

--

ORDER FORM

1	2	3	4	5

1. HOUSING

2-017 Square Shallow

2. HOUSING TYPE

IC-Q Insulated

IC-AT-Q Insulated Airtight

IC-Q-TL Trimless Insulated

IC-AT-Q-TL Trimless Airtight
Insulated

3. SERIES

E15 MR16 Electronic Transformer
(Halogen Replacement Lamp)¹

TOR MR16 Q-Tran Toroidal Magnetic
Transformer

GU10-HAL GU10 Halogen Lamp

GU10-LED GU10 LED²

4. VOLTAGE

120

277

5. OPTIONS

BP Black Painted Interior

WP White Painted Interior

NOTES

1 E15 transformer is rated for a maximum 15W, lamp sold separately. Ensure lamp and dimmer compatibility with lamp manufacturer.

2 GU10-LED is rated for a maximum 15W, lamp sold separately.