

# Legacy Housings

2-015 | Incandescent

## Square Insulated

### FEATURES

- Rated for insulation contact
- Airtight in accordance with ASTM E283
- 14"-25" adjustable hanger bars
- 20 Ga. cold rolled steel baseplate
- 18 Ga. galvanized steel junction box
- 5 junction box knock outs
- MR16 porcelain Bi Pin socket type GX5.3
- MR16 low voltage (12V) lamp sold separately
- GU10 line voltage (120V) lamp sold separately
- Over lamping protection
- Transformer accessible through the ceiling
- Approved for branch circuit wiring

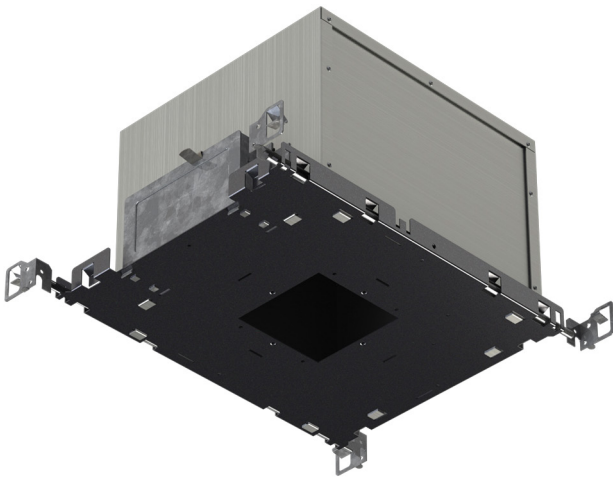
### CEILING CUTOUT

3 7/8" [99mm] x 3 7/8" [99mm]

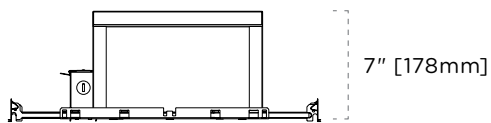
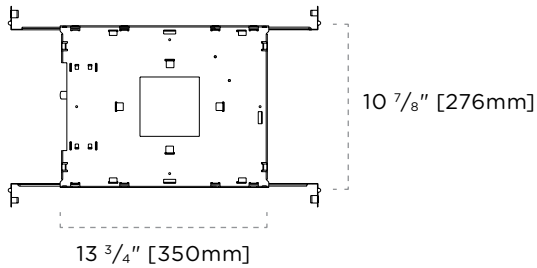
### PERFORMANCE SUMMARY

Lamp	Series	Input Voltage		
		120V	277V	347V
		Maximum Wattage		
MR16	Magnetic Transformer	37W	37W	37W
MR16	Electronic Transformer	37W	37W	—
MR16	E15 Electronic Transformer	15W	15W	—
MR16	Q-Tran Silent Magnetic Transformer	50W	50W	—
MR16	Magnetic Potted, Epoxy Encapsulated Transformer	50W	—	—
GU10	GU10 Halogen Lamp	50W	—	—
GU10	GU10 LED Lamp	15W	—	—

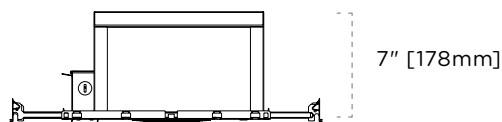
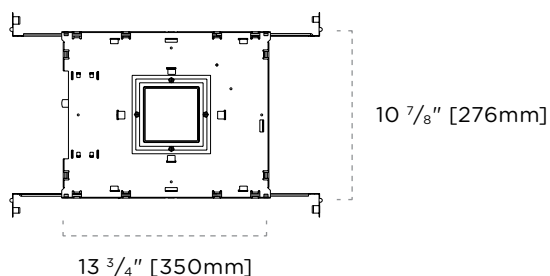
### CERTIFICATIONS



### DIMENSIONS—TRIMMED



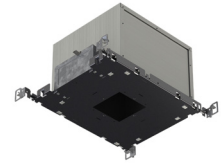
### DIMENSIONS—TRIMLESS



# Legacy Housings

2-015 | Incandescent

## Square Insulated



### TAG TYPE

--

### ORDER FORM

1	2	3	4	5

#### 1. HOUSING

**2-015** Square

#### 2. HOUSING TYPE

**IC-Q** Insulated

**IC-AT-Q** Insulated Airtight

**IC-Q-TL** Trimless Insulated

**IC-AT-Q-TL** Trimless Airtight  
Insulated

#### 3. SERIES

**E** MR16 Electronic Transformer  
(Halogen Lamp)

**E15** MR16 Electronic Transformer  
(Halogen Replacement Lamp)<sup>1</sup>

**M** MR16 Magnetic Transformer

**MPT** MR16 Magnetic Potted  
Transformer<sup>2</sup>

**TOR** MR16 Q-Tran Toroidal Magnetic  
Transformer

**GU10-HAL** GU10 Halogen Lamp

**GU10-LED** GU10 LED<sup>3</sup>

#### 4. VOLTAGE

**120**

**277**

**347**<sup>4</sup>

#### 5. OPTIONS

**BP** Black Painted Interior

**WP** White Painted Interior

#### NOTES

**1** E15 transformer is rated for a maximum 15W, lamp sold separately. Ensure lamp and dimmer compatibility with lamp manufacturer.

**2** MPT transformer option is available in 120 voltage.

**3** GU10-LED is rated for a maximum 15W, lamp sold separately.

**4** 347 voltage is only available with M magnetic transformer.