

# Legacy Housings

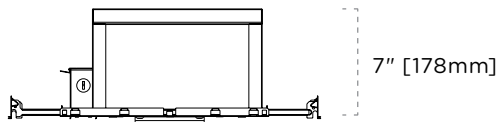
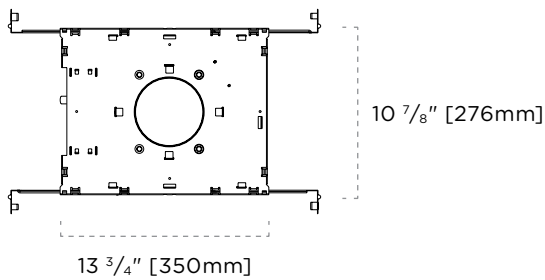
2-010 | Incandescent

## Round Insulated

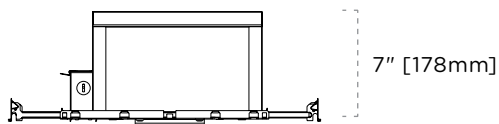
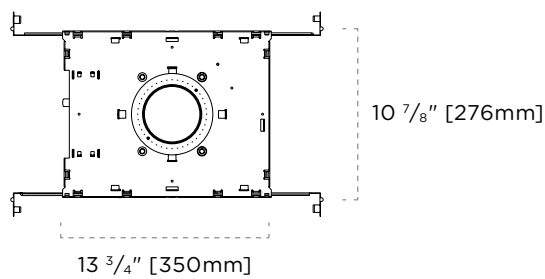
### FEATURES

- Rated for insulation contact
- Airtight in accordance with ASTM E283
- 14"-25" adjustable hanger bars
- 20 Ga. cold rolled steel baseplate
- 18 Ga. galvanized steel junction box
- 5 junction box knock outs
- MR16 porcelain Bi Pin socket type GX5.3
- MR16 low voltage (12V) lamp sold separately
- GU10 line voltage (120V) lamp sold separately
- Over lamping protection
- Transformer accessible through the ceiling
- Approved for branch circuit wiring

### DIMENSIONS—TRIMMED



### DIMENSIONS—TRIMLESS



### CEILING CUTOUT

Ø 4 1/2" [115mm]

### PERFORMANCE SUMMARY

| Lamp | Series  | Input Voltage   |      |      |
|------|---|-----------------|------|------|
|      |   | 120V            | 277V | 347V |
|      |   | Maximum Wattage |      |      |
| MR16 | Magnetic Transformer                            | 50W             | 50W  | 50W  |
| MR16 | Electronic Transformer                          | 37W             | 37W  | —    |
| MR16 | E15 Electronic Transformer                      | 15W             | 15W  | —    |
| MR16 | Q-Tran Silent Magnetic Transformer              | 50W             | 50W  | —    |
| MR16 | Magnetic Potted, Epoxy Encapsulated Transformer | 50W             | —    | —    |
| GU10 | GU10 Halogen Lamp                               | 50W             | —    | —    |
| GU10 | GU10 LED Lamp                                   | 15W             | —    | —    |

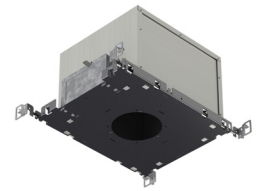
### CERTIFICATIONS



# Legacy Housings

2-010 | Incandescent

## Round Insulated



### TAG TYPE

### ORDER FORM

| 1 | 2 | 3 | 4 | 5 |
|---|---|---|---|---|
|   |   |   |   |   |

#### 1. HOUSING

**2-010** Round

#### 2. HOUSING TYPE

**IC** Insulated

**IC-AT** Insulated Airtight

**IC-TL** Trimless Insulated

**IC-AT-TL** Trimless Airtight Insulated

#### 3. SERIES

**E** MR16 Electronic Transformer  
(Halogen Lamp)

**E15** MR16 Electronic Transformer  
(Halogen Replacement Lamp)<sup>1</sup>

**M** MR16 Magnetic Transformer

**MPT** MR16 Magnetic Potted  
Transformer<sup>2</sup>

**TOR** MR16 Q-Tran Toroidal Magnetic  
Transformer

**GU10-HAL** GU10 Halogen Lamp

**GU10-LED** GU10 LED<sup>3</sup>

#### 4. VOLTAGE

**120**

**277**

**347**<sup>4</sup>

#### 5. OPTIONS

**BP** Black Painted Interior

**WP** White Painted Interior

#### NOTES

**1** E15 transformer is rated for a maximum 15W, lamp sold separately. Ensure lamp and dimmer compatibility with lamp manufacturer.

**2** MPT transformer option is only available in 120 voltage.

**3** GU10-LED is rated for a maximum 15W, lamp sold separately.

**4** 347 voltage is only available with M magnetic transformer.